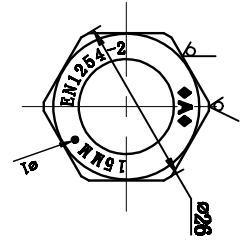


标注“WRAS”黑体, 字高3mm,  
和标注“◆A◆”

标注“WRAS”黑体, 字高3mm,  
和标注“◆A◆”



NO.	parts NO.	parts name	material	number	note
8					
7		Washer	EPDM	1	
6		Brass core	CW617N	1	
5		Flat nut	Brass	1	Nickel plating
4		Stainless steel sleeve	SS304	2	
3		Male thread adapter	CW617N	1	Nickel plating
2		Olive	H65	1	
1		Compensation Nut	Brass	1	Nickel plating

Specification  
 Fields of applications: water  
 Maximum working pressure: 1.0MPa  
 Working temperature: 0-85°C

Mrk	Modification	Date
Drawn:		
Checked:		
Appr.:		
Tolerances unless otherwise specified: ISO 2768-mk		



Title  
 15Cx1/2F×90CM Flex Tap Con -  
 WRAS

Projection	Scale	Size
	1:1	A4
Material:		Weight

NO.:	Sheet
Client NO.:	REV.
MFLC150490	01